



Equipment for the Foodservice Industry

value + quality + service

Salad/Sandwich Prep Tables

CSDW2-60VC



CSDW2-60VC

Features

Features:

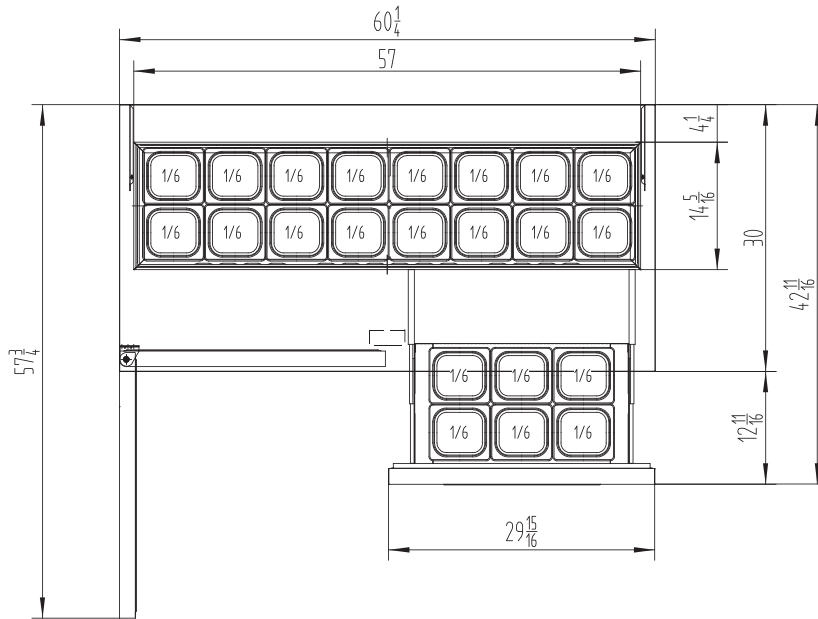
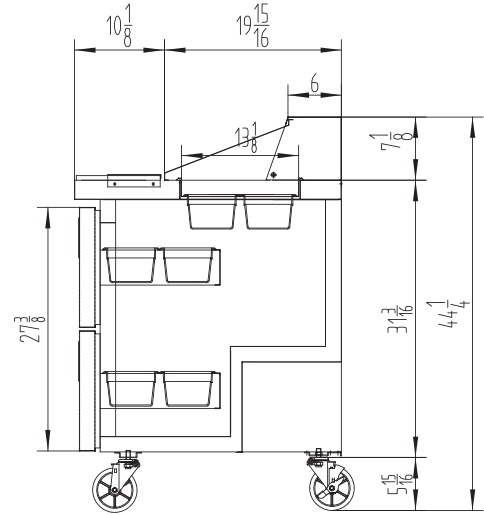
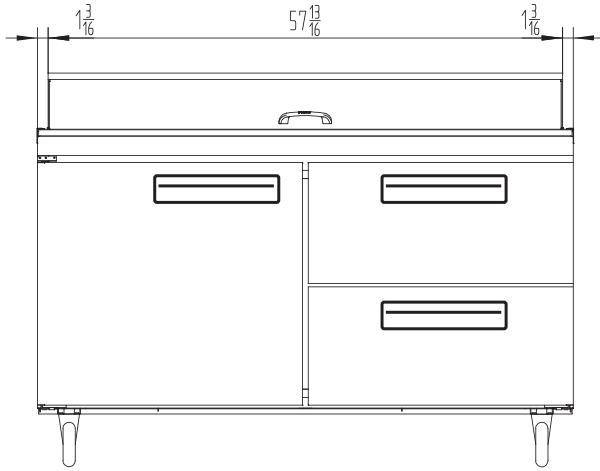
- Front breathing, side mount compressor
- Exterior & interior stainless steel construction
- Heavy duty Embraco compressor
- Self-closing and stay open door
- Efficient refrigeration system
- Recessed door handle
- Standard safety door lock
- Magnetic door gaskets
- Casters for easy movement
- Pre-installed shelves

Warranty:

- Two year parts and labour; Five years on compressor. *For full warranty details visit <https://www.efifoodequip.com/warranty-info.php>*



CSDW2-60VC Specifications



Model	Refrigrant	Doors	Shelves	Dimension (mm) (inch)			HP	Voltage	Amps	Capacity (L) (Cu Ft.)	Net Weight (KG) (LBS)	Temperature Range
				L	D	H						
CSDW2-60VC	R290	1	1	1530	762	1109	1/3	115/60	7.5	510	150	1 ~ 8°C
				60.2	30.0	43.7				18.0	330	33 ~ 45°F

Specifications subject to change without notice.



EFI Sales Ltd.
Toronto Office
515 Hanlon Blvd
Guelph, ON N1C 0A1

EFI Sales Ltd.
Vancouver Office
26895 Gloucester Way
Langley, BC V4W 3Y3

Distribution Facilities:
Toronto, ON
Langley, BC

(888) 565-9920 Toll Free
(519) 822-1895 Toronto
(604) 607-8850 Vancouver
info@efifoodequip.com
www.efifoodequip.com